

71'-0"

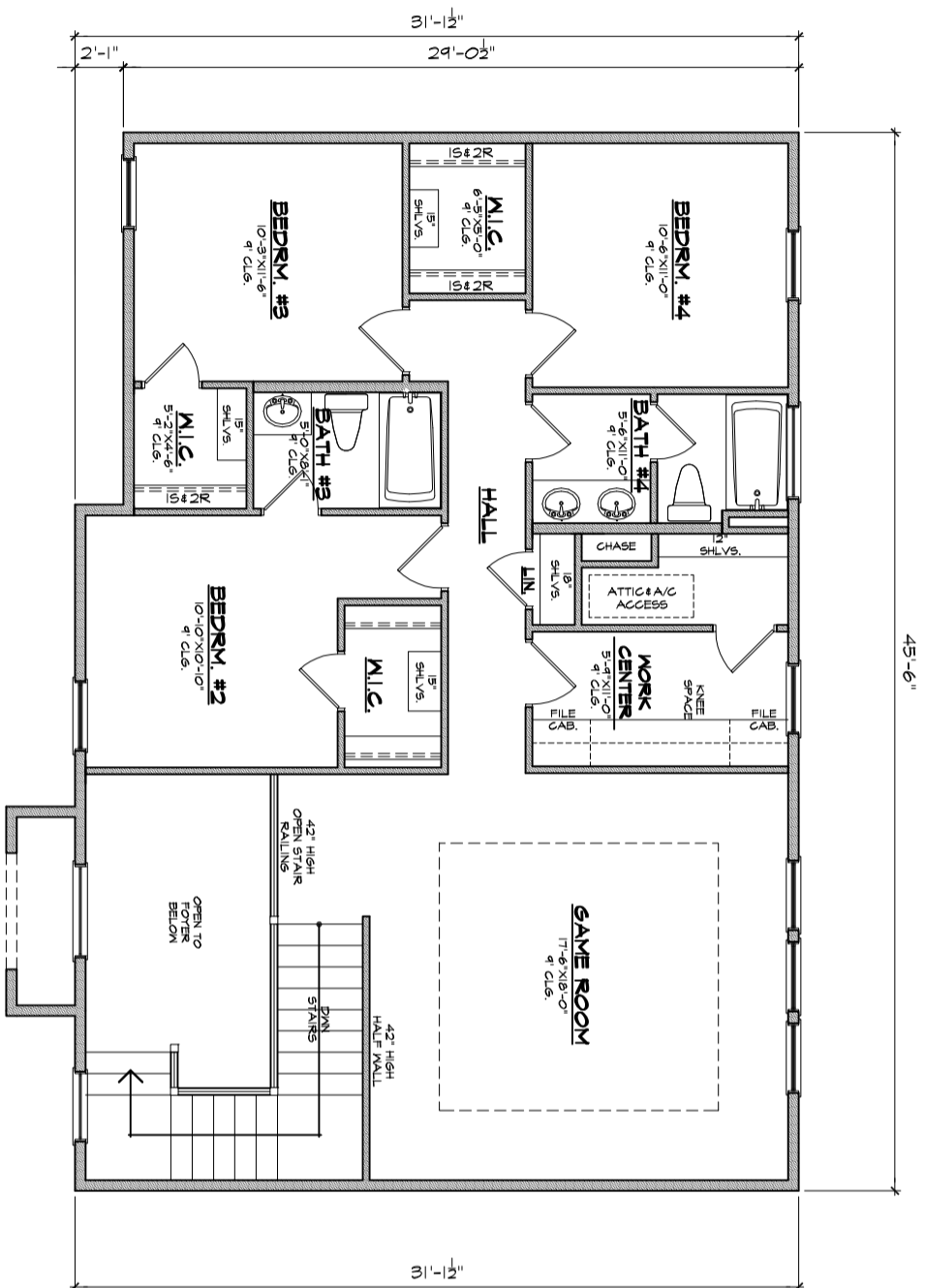
66'-0"

69'-4"

PRELIMINARY FLOOR PLAN

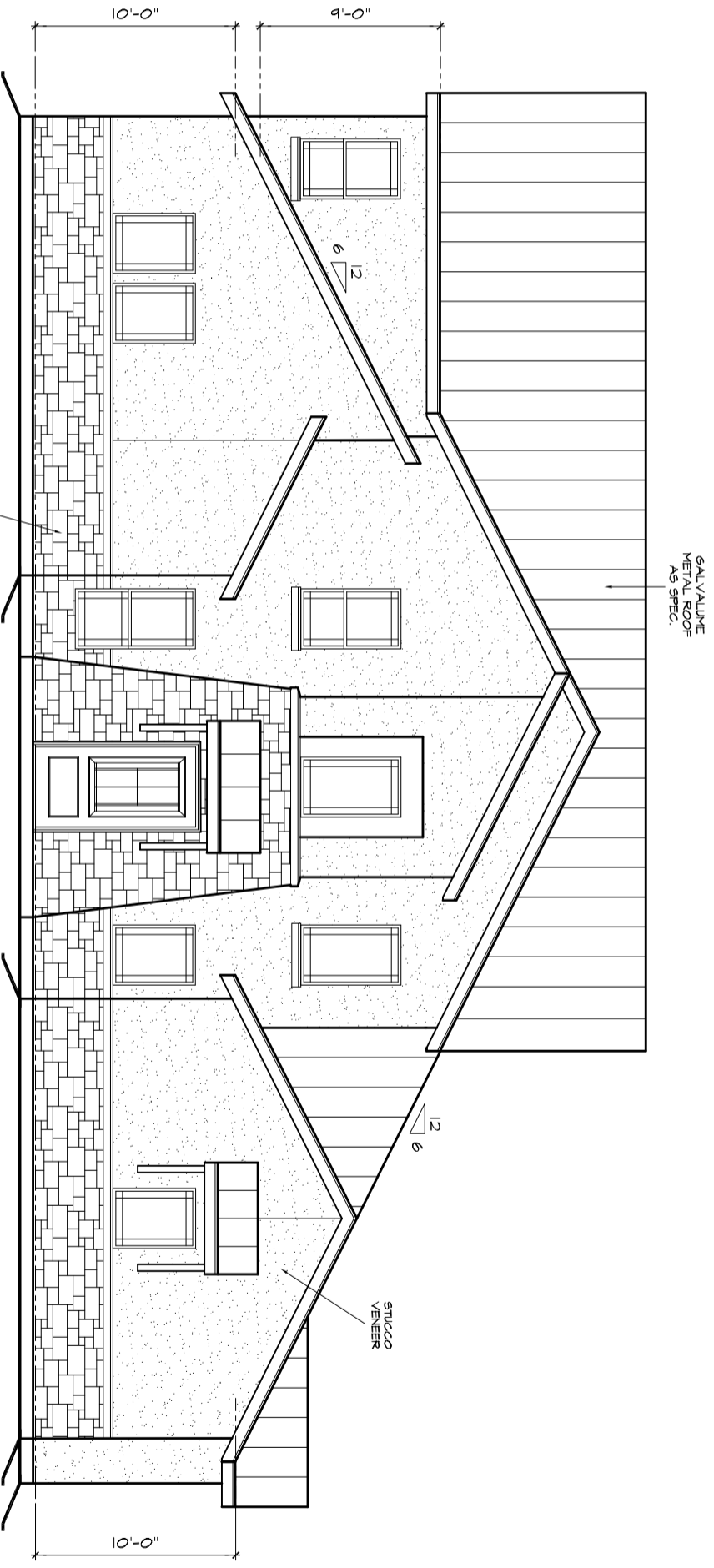
SCALE = 1/8" = 1'-0" On 11"x17" paper (NOTE
scale 1/4" = 1'-0" on 24"x36" paper)

FIRST FLR. = 2568 SF
 SECOND FLR. = 1187 SF
 TOTAL LIVING = 3755 SF



PRELIMINARY 2ND FLOOR PLAN

SCALE: 3/8" = 1'-0" ON 11"x17" PAPER (NOTE
SCALE 1/4" = 1'-0" ON 24" x 36" PAPER)



PRELIMINARY FRONT ELEVATION

SCALE = 1/8" = 1'-0" On 11"x17" paper
 (NOTE scale 1/2" = 1'-0" on 24" x 36" paper)